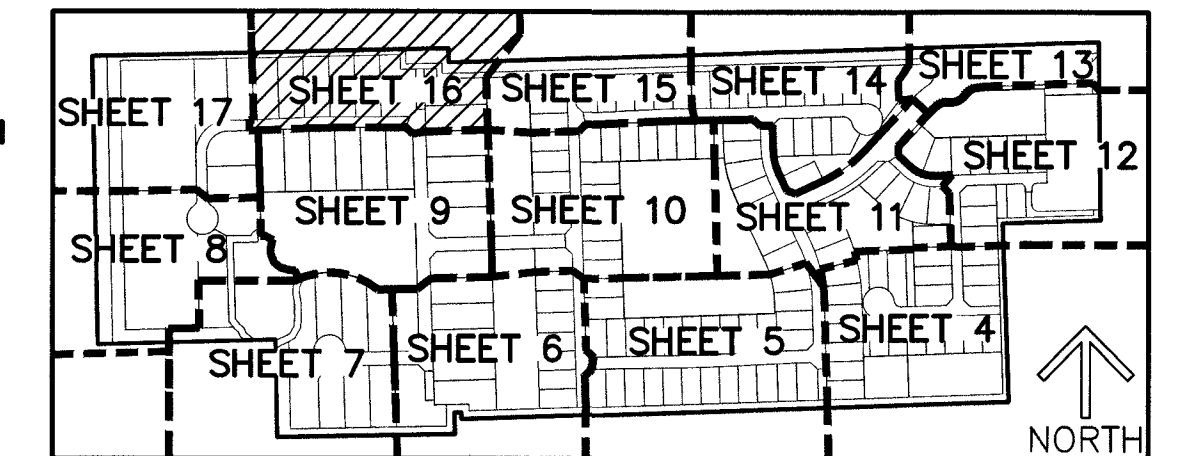


# TROTTER CENTER PROPERTY, P.U.D.

BEING A REPLAT OF A PORTION OF LOTS 17 THROUGH 20, INCLUSIVE, BLOCK 44 AND ALL OF LOTS 21, 22 AND 23, BLOCK 44 AND A PORTION OF THAT 25 FOOT RIGHT-WAY LYING WEST OF BLOCK 44, PALM BEACH FARMS COMPANY PLAT NO. 3, ACCORDING TO THE PLAT THEREOF, AS RECORDED IN PLAT BOOK 2, PAGES 45 THROUGH 54, TOGETHER WITH ALL OF TRACTS 74, 81, 82 AND A PORTION OF TRACTS 73, 75 AND 80 OF THE UNRECORDED PLAT OF HERITAGE FARMS, TOGETHER WITH A PORTION OF THE 25-FOOT WIDE LAKE WORTH DRAINAGE DISTRICT RIGHT-OF-WAY AS RECORDED IN OFFICIAL RECORDS BOOK 1585, PAGE 505, LYING IN SECTION 12, TOWNSHIP 45 SOUTH, RANGE 41 EAST, PALM BEACH COUNTY, FLORIDA,

THIS INSTRUMENT PREPARED BY  
DAVID P. LINDLEY  
OF  
**CAULFIELD & WHEELER, INC.**  
SURVEYORS - ENGINEERS - PLANNERS  
7900 GLADES ROAD, SUITE 100  
BOCA RATON, FLORIDA 33434 - (561)392-1991



89

SHEET 16 OF 17

### LEGEND/ABBREVIATIONS:

- |   |   |
|---|---|
| ESMT - EASEMENT                                 | PC - POINT OF CURVATURE   |
| P.O.C. - POINT OF COMMENCEMENT                  | PT - POINT OF TANGENCY  |
| P.O.B. - POINT OF BEGINNING                     | PNT - POINT OF NON-TANGENCY   |
| P.B. - PLAT BOOK                                | PRC - POINT OF REVERSE CURVATURE  |
| O.R.B. - OFFICIAL RECORD BOOK                   | PLD - PLANNED UNIT DEVELOPMENT  |
| PG(S) - PAGE(S)                                 | L.W.D.D. - LAKE WORTH DRAINAGE DISTRICT   |
| R.P.B. - ROAD PLAT BOOK                         | LB - LICENSED BUSINESS  |
| Δ - DELTA (CENTRAL ANGLE)                       | F.D.O.T. - FLORIDA DEPARTMENT OF TRANSPORTATION   |
| CB - CHORD BEARING                              | (R) - RADIAL LINE   |
| CD - CHORD DISTANCE                             | SQ FT - SQUARE FEET   |
| R - RADIUS                                      | PRAS - PRIVATE RESIDENTIAL ACCESS STREET  |
| L - ARC LENGTH                                  | NAD - NORTH AMERICAN DATUM  |
| CL - CENTERLINE                                 | PRM - PERMANENT REFERENCE MONUMENT  |
| E - EASTING (WHEN USED WITH COORDINATES)        | R/W - RIGHT-OF-WAY  |
| N - NORTHING (WHEN USED WITH COORDINATES)       | FPL - FLORIDA POWER & LIGHT   |
| D.E. - DRAINAGE EASEMENT                        | ■ PRM - DENOTES SET PERMANENT REFERENCE MONUMENT 4" x 4" x 24" CONCRETE MONUMENT WITH ALUMINUM DISK STAMPED "C&W PRM LB3591" UNLESS OTHERWISE NOTED |
| L.A.E. - LIMITED ACCESS EASEMENT                | ● PCP - DENOTES SET PERMANENT CONTROL POINT NAIL AND METAL DISK STAMPED "PCP LB3591"  |
| L.M.E. - LAKE MAINTENANCE EASEMENT              | △ - DENOTES HORIZONTAL CONTROL POINT  |
| L.M.A.E. - LAKE MAINTENANCE ACCESS EASEMENT     | ▲ - DENOTES SET PERMANENT REFERENCE MONUMENT NAIL AND DISC STAMPED "PRM" LB 3591  |
| L.S.E. - LIFT STATION EASEMENT                  |   |
| MOHE - MAINTENANCE AND OVERHANG EASEMENT        |   |
| P.B.C.U.E. - PALM BEACH COUNTY UTILITY EASEMENT |   |
| R/W - RIGHT-OF-WAY                              |   |
| (S) - SURVEY MEASUREMENT                        |   |
| U.E. - UTILITY EASEMENT                         |   |

### NOTES COORDINATES, BEARINGS AND DISTANCES

COORDINATES SHOWN ARE GRID  
DATUM = NAD 83 1990 ADJUSTMENT  
ZONE = FLORIDA EAST  
LINEAR UNIT = U.S. SURVEY FEET  
COORDINATE SYSTEM 1983 STATE PLANE  
TRANSVERSE MERCATOR PROJECTION  
ALL DISTANCES ARE GROUND UNLESS OTHERWISE NOTED  
SCALE FACTOR = 1.000016951  
GROUND DISTANCE X SCALE FACTOR = GRID DISTANCE  
BEARINGS AS SHOWN HEREON ARE GRID DATUM,  
NAD 83 (1990 ADJUSTMENT), FLORIDA EAST ZONE.

